

YEAR

2020

LINK SMITHFIELD (from POK FU LAM RD to LUNG WAH ST)

COVERAGE (B) STATION

2407

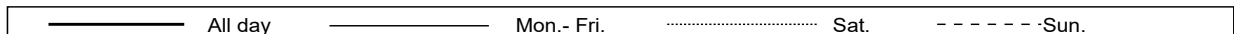
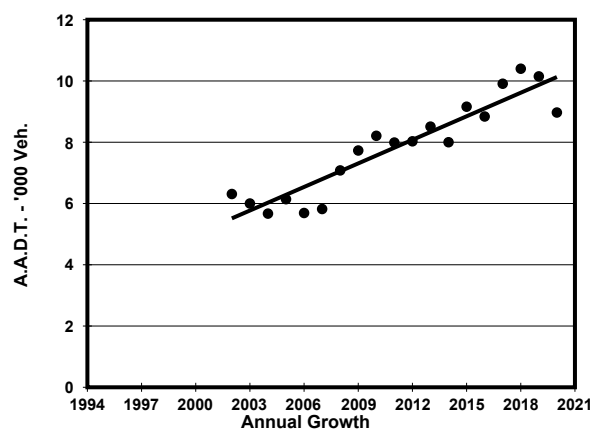
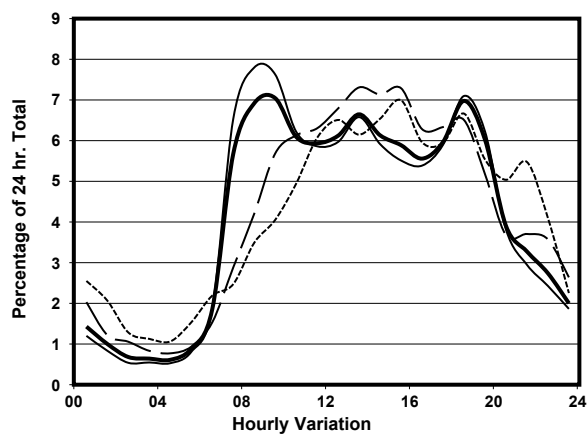
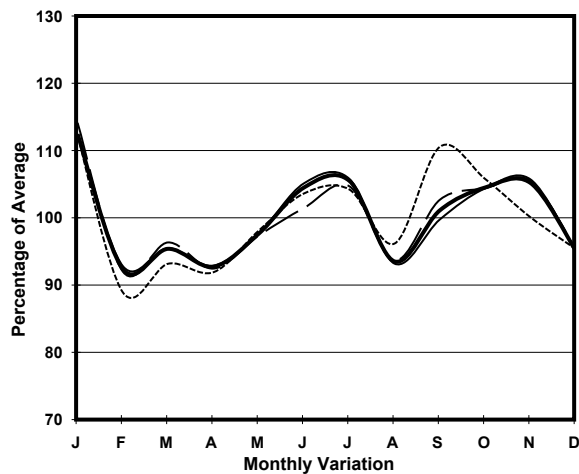
ROAD NETWORK

MINOR

ROAD TYPE

DISTRICT DISTRIBUTOR

1. TRAFFIC FLOW VARIATION AND GROWTH



2. TRAFFIC CHARACTERISTICS (BY DIRECTION)

Parameter	All - Day	Mon. - Fri.	Sat.	Sun.
SOUTH BOUND				
A.A.D.T.	6830	7640	6490	4070
R 12 / 24 - %	75.6	77.1	73.4	65.3
R 16 / 24 - %	91	92	89.2	85.3
AM Peak Hour	0900-1000	0900-1000	0900-1000	0900-1000
One-way flow at AM peak hour	510	630	370	160
T - % (AM)	-	4	-	-
PM Peak Hour	1800-1900	1800-1900	1600-1700	1600-1700
One-way flow at PM peak hour	460	520	410	260
T - % (PM)	-	4	-	-
Prop.of commercial vehicles - 16 hr.	-	3	-	-
NORTH BOUND				
A.A.D.T.	2140	2300	2130	1630
R 12 / 24 - %	72.8	74	71.1	67
R 16 / 24 - %	90.6	91.3	88.5	87.4
AM Peak Hour	0800-0900	0800-0900	0900-1000	0900-1000
One-way flow at AM peak hour	130	150	120	70
T - % (AM)	-	3.8	-	-
PM Peak Hour	1800-1900	1800-1900	1800-1900	1800-1900
One-way flow at PM peak hour	170	180	150	130
T - % (PM)	-	-	-	-
Prop.of commercial vehicles - 16 hr.	-	3.2	-	-

3. OTHER INFORMATION AND COMMENT

4. Vehicle classification and occupancy - Monday to Friday

Time		Class of vehicle									
		Motor Cycle	Private Car	Taxi	Private LB	PLB	Goods veh.		Non Fr. Bus	Fr. Bus	
							Light	M & H		SD	DD
0700-0800	Pro	2.5	35.6	31.3	3.1	8.1	12.5	3.1	3.8	0.0	0.0
	Ocp	1.0	1.5	2.2	7.2	13.5	1.6	1.8	8.3	0.0	0.0
0800-0900 Peak hour	Pro	3.7	49.8	24.1	3.7	6.5	10.2	0.0	2.0	0.0	0.0
	Ocp	1.0	1.4	2.1	2.7	12.0	1.5	0.0	7.4	0.0	0.0
0900-1000	Pro	1.9	40.9	28.4	0.9	6.5	16.3	2.8	2.3	0.0	0.0
	Ocp	1.3	1.5	2.3	2.5	13.2	1.6	1.3	9.4	0.0	0.0
1000-1100	Pro	1.8	39.8	29.8	1.2	3.5	21.6	1.2	1.2	0.0	0.0
	Ocp	1.0	1.4	2.3	1.5	11.2	1.6	1.0	2.0	0.0	0.0
1100-1200	Pro	2.9	29.3	30.7	1.4	5.7	28.6	0.7	0.7	0.0	0.0
	Ocp	1.0	1.2	2.1	2.5	11.8	1.7	2.0	21.0	0.0	0.0
1200-1300	Pro	7.0	38.2	28.0	1.6	5.4	16.7	2.2	1.1	0.0	0.0
	Ocp	1.0	1.4	2.5	2.3	11.0	1.5	1.5	4.5	0.0	0.0
1300-1400	Pro	5.6	33.8	26.9	0.6	5.6	23.1	2.5	1.9	0.0	0.0
	Ocp	1.1	1.5	2.5	3.0	17.9	1.6	1.5	5.7	0.0	0.0
1400-1500	Pro	3.4	38.2	27.0	1.1	6.2	19.7	2.2	2.2	0.0	0.0
	Ocp	1.0	1.5	2.3	7.0	12.7	1.5	3.3	8.5	0.0	0.0
1500-1600	Pro	4.5	48.0	20.0	1.5	3.5	20.5	0.5	1.5	0.0	0.0
	Ocp	1.0	1.5	2.2	1.7	13.7	1.7	2.0	29.7	0.0	0.0
1600-1700	Pro	5.5	44.8	20.7	4.8	6.2	15.9	0.7	1.4	0.0	0.0
	Ocp	1.1	1.3	1.9	3.3	10.3	1.2	1.0	12.5	0.0	0.0
1700-1800	Pro	5.7	45.7	21.4	2.9	8.6	12.1	1.4	2.1	0.0	0.0
	Ocp	1.1	1.4	2.3	4.3	18.1	1.4	1.5	2.3	0.0	0.0
1800-1900	Pro	6.4	50.8	28.0	0.0	5.3	6.4	1.6	1.6	0.0	0.0
	Ocp	1.0	1.4	2.3	0.0	17.3	1.3	1.3	7.7	0.0	0.0
1900-2000	Pro	5.6	60.5	23.6	0.0	6.2	3.1	0.0	1.0	0.0	0.0
	Ocp	1.1	1.3	2.1	0.0	10.8	1.5	0.0	14.5	0.0	0.0
2000-2100	Pro	1.6	48.4	36.3	0.0	7.3	4.0	0.8	1.6	0.0	0.0
	Ocp	1.0	1.7	2.0	0.0	9.1	1.8	1.0	1.0	0.0	0.0
2100-2200	Pro	3.5	47.1	42.4	0.0	2.4	3.5	1.2	0.0	0.0	0.0
	Ocp	1.0	1.5	2.5	0.0	14.0	1.3	1.0	0.0	0.0	0.0
2200-2300	Pro	1.2	39.0	53.7	1.2	2.4	2.4	0.0	0.0	0.0	0.0
	Ocp	1.0	1.8	2.1	1.0	8.0	1.5	0.0	0.0	0.0	0.0
16 hours	Pro	4.1	43.6	28.0	1.6	5.7	14.1	1.3	1.6	0.0	0.0
	Ocp	1.0	1.4	2.2	3.5	13.1	1.5	1.7	9.2	0.0	0.0

Legend: Pro. Proportion of vehicles in % (Sum may not add up to 100% due to figure rounding)*

Ocp. Average occupancy of vehicles including both driver and passengers*

M&H Medium and Heavy

* All traffic data are collected from combined bounds